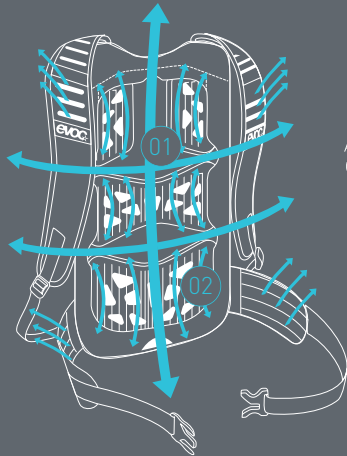


TECHNICAL PERFORMANCE PACKS TECHNOLOGY



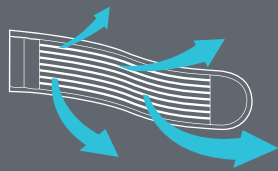
AIR FLOW CONTACT SYSTEM

The requirement here is to transfer loads to the body's centre of gravity such that they become neutral, while at the same time minimising the contact areas with the back.

We solve this contradiction by means of a back component where all ventilation components such as large ventilation

channels **01** and specially grooved and perforated EVA pads **02** behind mesh material have practically been moved to the inside.

This ensures that the pack fits close to the back and simultaneously provides optimised back ventilation.



AIRO FLEX

AIRO FLEX is an extremely sturdy material that is both permeable and flexible. We use it for our top-quality hip belts

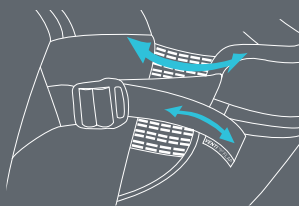
to ensure optimum load transfer to the hips, with simultaneous maximum ventilation – for utmost carrying comfort.



BRACE LINK

The BRACE LINK adjusts the shoulder belts perfectly to the width of the athletes shoulders. This automatically adjustment endorse the load transfer to the body's centre of gravity, while at

the same time the contact areas with back and shoulders are minimized. Even wearing a neck brace is possible through the BRACE LINK.



VENTI FLAP

The VENTI FLAP system enables folding the back piece away for maximum ventilation, and thus enhanced carrying comfort. During longer ascents, you can increase the distance to your back by opening the adjustment strap to

boost air circulation. During descents you can reduce the distance again, which then ensures that the backpack sits firmly and is completely neutral to movement.

TECHNICAL PERFORMANCE PACKS
STAGE 18L



BLACK
100203100



RED
100203500



NEON BLUE
100203206

NEW COLOUR

FEATURES



The STATE 18l is a multi-faceted, technical daypack. The series is characterised by the BRACE LINK carrying system, which adapts to the wearer's individual shoulder width. The number one backpack for all those looking for ultimate carrying comfort and uncompromising back ventilation when riding their bike.

- AIR FLOW CONTACT SYSTEM offers perfect back ventilation
- BRACE LINK for optimal adjustment of the shoulder straps
- Tool compartment (separate, quick-access)

18 l, 900 g, 28 x 50 x 12 cm

MATERIAL
Nylon 210/D Ripstop PU coated, P600/D PU coated, Air Mesh, 3D Air Mesh, AIRO FLEX

TECHNICAL PERFORMANCE PACKS
STAGE 18L TEAM



AIR FLOW
CONTACT SYSTEM



team
WHITE - OLIVE
100203801

An individual colour concept differentiates the STAGE 18l **team** from the STAGE 18l standard model, but both backpacks have the same features.

protector// backpacks
performance// packs
bike travel// bags
accessories//
city & travel//
photo//
protection// wear