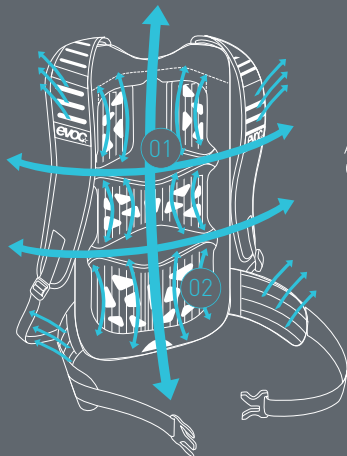


# TECHNICAL PERFORMANCE PACKS TECHNOLOGY



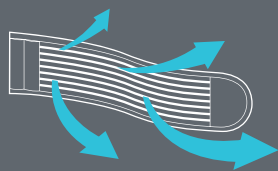
## AIR FLOW CONTACT SYSTEM

The requirement here is to transfer loads to the body's centre of gravity such that they become neutral, while at the same time minimising the contact areas with the back.

We solve this contradiction by means of a back component where all ventilation components such as large ventilation

channels **01** and specially grooved and perforated EVA pads **02** behind mesh material have practically been moved to the inside.

This ensures that the pack fits close to the back and simultaneously provides optimised back ventilation.



## AIRO FLEX

AIRO FLEX is an extremely sturdy material that is both permeable and flexible. We use it for our top-quality hip belts

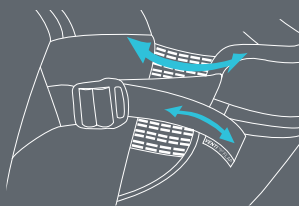
to ensure optimum load transfer to the hips, with simultaneous maximum ventilation – for utmost carrying comfort.



## BRACE LINK

The BRACE LINK adjusts the shoulder belts perfectly to the width of the athletes shoulders. This automatically adjustment endorse the load transfer to the body's centre of gravity, while at

the same time the contact areas with back and shoulders are minimized. Even wearing a neck brace is possible through the BRACE LINK.



## VENTI FLAP

The VENTI FLAP system enables folding the back piece away for maximum ventilation, and thus enhanced carrying comfort. During longer ascents, you can increase the distance to your back by opening the adjustment strap to

boost air circulation. During descents you can reduce the distance again, which then ensures that the backpack sits firmly and is completely neutral to movement.

# TECHNICAL PERFORMANCE PACKS STAGE 12L



**PETROL -  
RED - RUBY**  
100204316



**BLACK**  
100204100

**MATERIAL**  
N210 D Ripstop  
PU coated, P600 D  
PU coated, 3D Air  
Mesh, Air Mesh,  
AIROFLEX



With the STAGE 12l you get a compact technical daypack with excellent features. It's the number one pack for those looking to ride their bike with little equipment but uncompromising carrying comfort. Extra convenience comes with the freely moving BRACE LINK that allows the shoulder straps to adapt to the individual shoulder width of the wearer.

- AIR FLOW CONTACT SYSTEM offers perfect back ventilation
- BRACE LINK for optimal adjustment of the shoulder straps
- Tool compartment (separate, quick-access)



**SULPHUR -  
YELLOW - OLIVE**  
100204413

12 l, 850 g, 28 x 50 x 9 cm

### FEATURES



# TECHNICAL PERFORMANCE PACKS STAGE 12L TEAM



**ATTACHMENT  
SYSTEMS FOR  
HELMETS**



**team**

**BLACK -  
WHITE -  
NEON  
ORANGE**  
100204116

NEW COLOUR

Designed in collaboration with our team riders, the STAGE 12l **team** stands out from the other STAGE 12l models thanks to its stronger branding. The features of the two colour variations are identical, however.