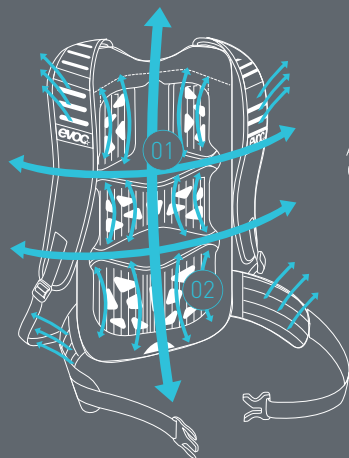


TECHNICAL PERFORMANCE PACKS TECHNOLOGY



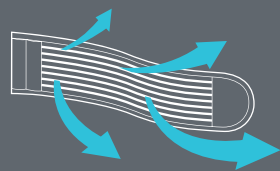
AIR FLOW CONTACT SYSTEM

The requirement here is to transfer loads to the body's centre of gravity such that they become neutral, while at the same time minimising the contact areas with the back.

We solve this contradiction by means of a back component where all ventilation components such as large ventilation

channels **01** and specially grooved and perforated EVA pads **02** behind mesh material have practically been moved to the inside.

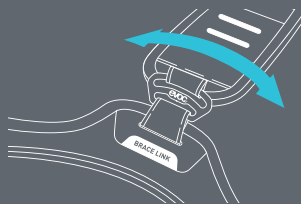
This ensures that the pack fits close to the back and simultaneously provides optimised back ventilation.



AIRO FLEX

AIRO FLEX is an extremely sturdy material that is both permeable and flexible. We use it for our top-quality hip belts

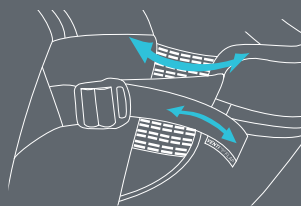
to ensure optimum load transfer to the hips, with simultaneous maximum ventilation – for utmost carrying comfort.



BRACE LINK

The BRACE LINK adjusts the shoulder belts perfectly to the width of the athletes shoulders. This automatically adjustment endorse the load transfer to the body's centre of gravity, while at

the same time the contact areas with back and shoulders are minimized. Even wearing a neck brace is possible through the BRACE LINK.



VENTI FLAP

The VENTI FLAP system enables folding the back piece away for maximum ventilation, and thus enhanced carrying comfort. During longer ascents, you can increase the distance to your back by opening the adjustment strap to

boost air circulation. During descents you can reduce the distance again, which then ensures that the backpack sits firmly and is completely neutral to movement.

TECHNICAL PERFORMANCE PACKS
ROAMER 22L

TECHNICAL PERFORMANCE PACKS
ROAMER 22L TEAM



BLACK
100202100



**NEON BLUE
- GREEN**
100202207



AIR FLOW CONTACT
SYSTEM



team
**LIGHT PETROL -
WHITE**
100202321

FEATURES



The ROAMER 22L features our AIR FLOW CONTACT SYSTEM, which ensures balanced load distribution on tour – with maximum ventilation. This makes the backpack the perfect partner for long stages.

- AIR FLOW CONTACT SYSTEM offers perfect back ventilation
- Tool compartment (separate)
- Accommodates hydration systems up to 3 l

22 l, 1100 g, 28 x 52 x 16 cm

MATERIAL
Nylon 210/D Ripstop PU coated, P600/D
PU coated, Air Mesh, 3D Air Mesh,
Atilon PE Foam

The Team edition was developed in cooperation with our athletes. The ROAMER 22l **team** is a special colour variation of the ROAMER 22l and boasts the same features and details.

protector// backpacks
 performance// packs
 bike travel// bags
 accessories//
 city & travel//
 photo//
 protection// wear

NEW COLOUR