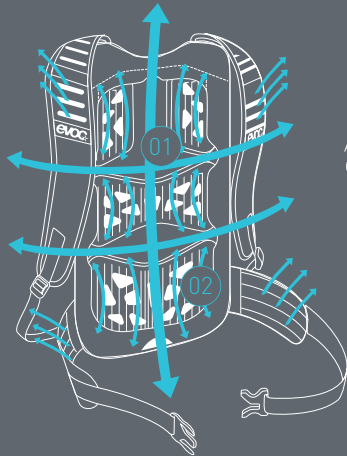


# TECHNICAL PERFORMANCE PACKS TECHNOLOGY



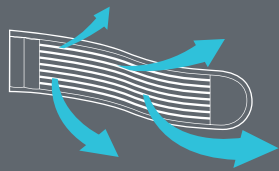
## AIR FLOW CONTACT SYSTEM

The requirement here is to transfer loads to the body's centre of gravity such that they become neutral, while at the same time minimising the contact areas with the back.

We solve this contradiction by means of a back component where all ventilation components such as large ventilation

channels **01** and specially grooved and perforated EVA pads **02** behind mesh material have practically been moved to the inside.

This ensures that the pack fits close to the back and simultaneously provides optimised back ventilation.



## AIRO FLEX

AIRO FLEX is an extremely sturdy material that is both permeable and flexible. We use it for our top-quality hip belts

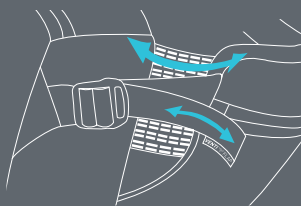
to ensure optimum load transfer to the hips, with simultaneous maximum ventilation – for utmost carrying comfort.



## BRACE LINK

The BRACE LINK adjusts the shoulder belts perfectly to the width of the athletes shoulders. This automatically adjustment endorse the load transfer to the body's centre of gravity, while at

the same time the contact areas with back and shoulders are minimized. Even wearing a neck brace is possible through the BRACE LINK.



## VENTI FLAP

The VENTI FLAP system enables folding the back piece away for maximum ventilation, and thus enhanced carrying comfort. During longer ascents, you can increase the distance to your back by opening the adjustment strap to

boost air circulation. During descents you can reduce the distance again, which then ensures that the backpack sits firmly and is completely neutral to movement.

TECHNICAL PERFORMANCE PACKS  
NEW: HIP PACK RACE 3L



**BLACK**  
102501100  
102502100\*



**RED - NEON BLUE**  
102501502  
102502502\*



AIRFLOW CONTACT  
SYSTEM



**OLIVE - LIGHT  
PETROL**  
102501320  
102502320\*



FEATURES



Offering optimised back ventilation, the HIP PACK RACE 3L is perfect for bike rides with little equipment. Thanks to the VENTI FLAP system you can individually adjust the distance to your back, and with that, the ventilation along the back panel.

- AIR FLOW CONTACT SYSTEM offers perfect back ventilation
- Accommodates hydration systems up to 1,5 l
- Tool compartment (separate, quick-access)

- \*Option: HYDRATION BLADDER 1,5 l (included)

3 l, 350 g + 130 g Bladder, 28 x 18 x 8 cm

MATERIAL

N210/D Ripstop, PU Coated, P200/D, Air Mesh, EVA, Darlington Mesh



PHOTO LOC.

11.17°, 106.99°  
RUNG CHIEN KHU D, VN  
R: HOLGER FEIST  
P: BASCHI BENDER

