

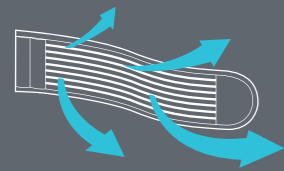
AIR FLOW CONTACT SYSTEM

The requirement here is to transfer loads to the body's centre of gravity such that they become neutral, while at the same time minimising the contact areas with the back.

We solve this contradiction by means of a back component where all ventilation components such as large ventilation

channels **01** and specially grooved and perforated EVA pads **02** behind mesh material have practically been moved to the inside.

This ensures that the pack fits close to the back and simultaneously provides optimised back ventilation.



AIRO FLEX

AIRO FLEX is an extremely sturdy material that is both permeable and flexible. We use it for our top-quality hip belts

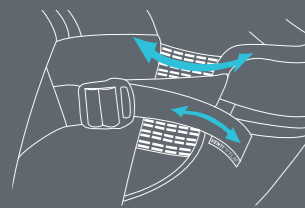
to ensure optimum load transfer to the hips, with simultaneous maximum ventilation – for utmost carrying comfort.



BRACE LINK

The BRACE LINK adjusts the shoulder belts perfectly to the width of the athletes shoulders. This automatically adjustment endorse the load transfer to the body's centre of gravity, while at

the same time the contact areas with back and shoulders are minimized. Even wearing a neck brace is possible through the BRACE LINK.



VENTI FLAP

The VENTI FLAP system enables folding the back piece away for maximum ventilation, and thus enhanced carrying comfort. During longer ascents, you can increase the distance to your back by opening the adjustment strap to

boost air circulation. During descents you can reduce the distance again, which then ensures that the backpack sits firmly and is completely neutral to movement.



BLACK - MUD
100201102



RUBY
100201505



team
BLACK - PETROL - WHITE
100201103

FEATURES



The EXPLORER is a large touring backpack with a comfortable carrying system and optimised back ventilation, making it the perfect partner for excursions lasting several days.

- AIR FLOW CONTACT SYSTEM offers perfect back ventilation
- Main compartment with reach-through opening
- Accommodates hydration systems up to 3 l

30 l, 1250 g, 28 x 54 x 21 cm

MATERIAL
Nylon 210/D Ripstop PU coated, P600/D PU coated, Air Mesh, 3D Air Mesh, Atilon PE Foam

protector// backpacks
 performance// packs
 bike travel// bags
 accessories//
 city & travel//
 photo//
 protection// wear