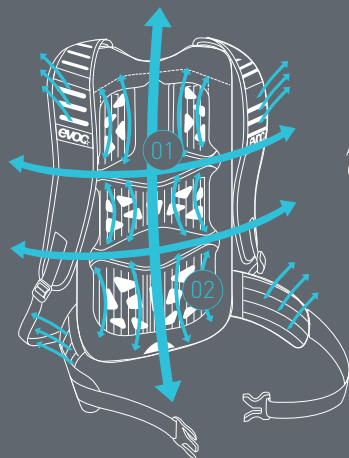


TECHNICAL PERFORMANCE PACKS TECHNOLOGY



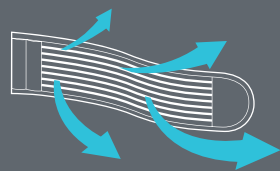
AIR FLOW CONTACT SYSTEM

The requirement here is to transfer loads to the body's centre of gravity such that they become neutral, while at the same time minimising the contact areas with the back.

We solve this contradiction by means of a back component where all ventilation components such as large ventilation

channels **01** and specially grooved and perforated EVA pads **02** behind mesh material have practically been moved to the inside.

This ensures that the pack fits close to the back and simultaneously provides optimised back ventilation.



AIRO FLEX

AIRO FLEX is an extremely sturdy material that is both permeable and flexible. We use it for our top-quality hip belts

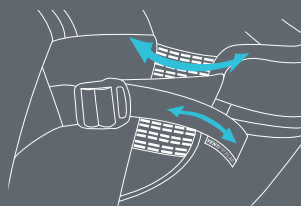
to ensure optimum load transfer to the hips, with simultaneous maximum ventilation – for utmost carrying comfort.



BRACE LINK

The BRACE LINK adjusts the shoulder belts perfectly to the width of the athletes shoulders. This automatically adjustment endorse the load transfer to the body's centre of gravity, while at

the same time the contact areas with back and shoulders are minimized. Even wearing a neck brace is possible through the BRACE LINK.



VENTI FLAP

The VENTI FLAP system enables folding the back piece away for maximum ventilation, and thus enhanced carrying comfort. During longer ascents, you can increase the distance to your back by opening the adjustment strap to

boost air circulation. During descents you can reduce the distance again, which then ensures that the backpack sits firmly and is completely neutral to movement.

TECHNICAL PERFORMANCE PACKS
STAGE 3L



BLACK
100209100
100206100*

NEW COLOUR



LIGHT PETROL
100209306
100206306*



NEON BLUE
100209206
100206206*

TECHNICAL PERFORMANCE PACKS
NEW: STAGE 3L TEAM



HYDRATION SYSTEM
COMPARTMENT



team
RED - RUBY
100209503
100206503*

NEW

FEATURES



The STAGE 3L is a reduced, technical bike backpack that's been developed to ensure optimal liquid supply at high temperatures and during fast races. Extra convenience comes with the removable hip belt and the BRACE LINK carrying system.

- AIR FLOW CONTACT SYSTEM offers perfect back ventilation
- BRACE LINK for optimal adjustment of the shoulder straps
- Accommodates hydration systems up to 2 l

- *Option: HYDRATION BLADDER 2l (included)

3 l, 520 g, 21 x 44 x 4 cm

MATERIAL
Nylon 210/D Ripstop PU coated, P600/D
PU coated, Air Mesh,

The striking logo design of the STAGE 3L **team** distinguishes this pack from the simpler STAGE 3L, but both models have the same features.

protector// backpacks
performance// packs
bike travel// bags
accessories//
city & travel//
photo//
protection// wear